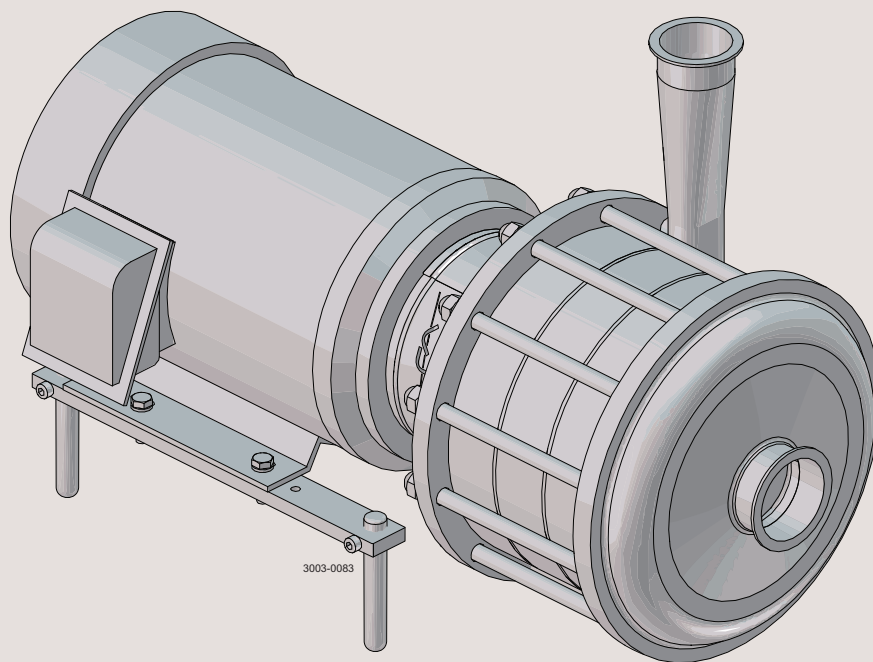




Spare Parts

LKH-110, -120US Multi-Stage Centrifugal Pump



ESE00719-ENUS10

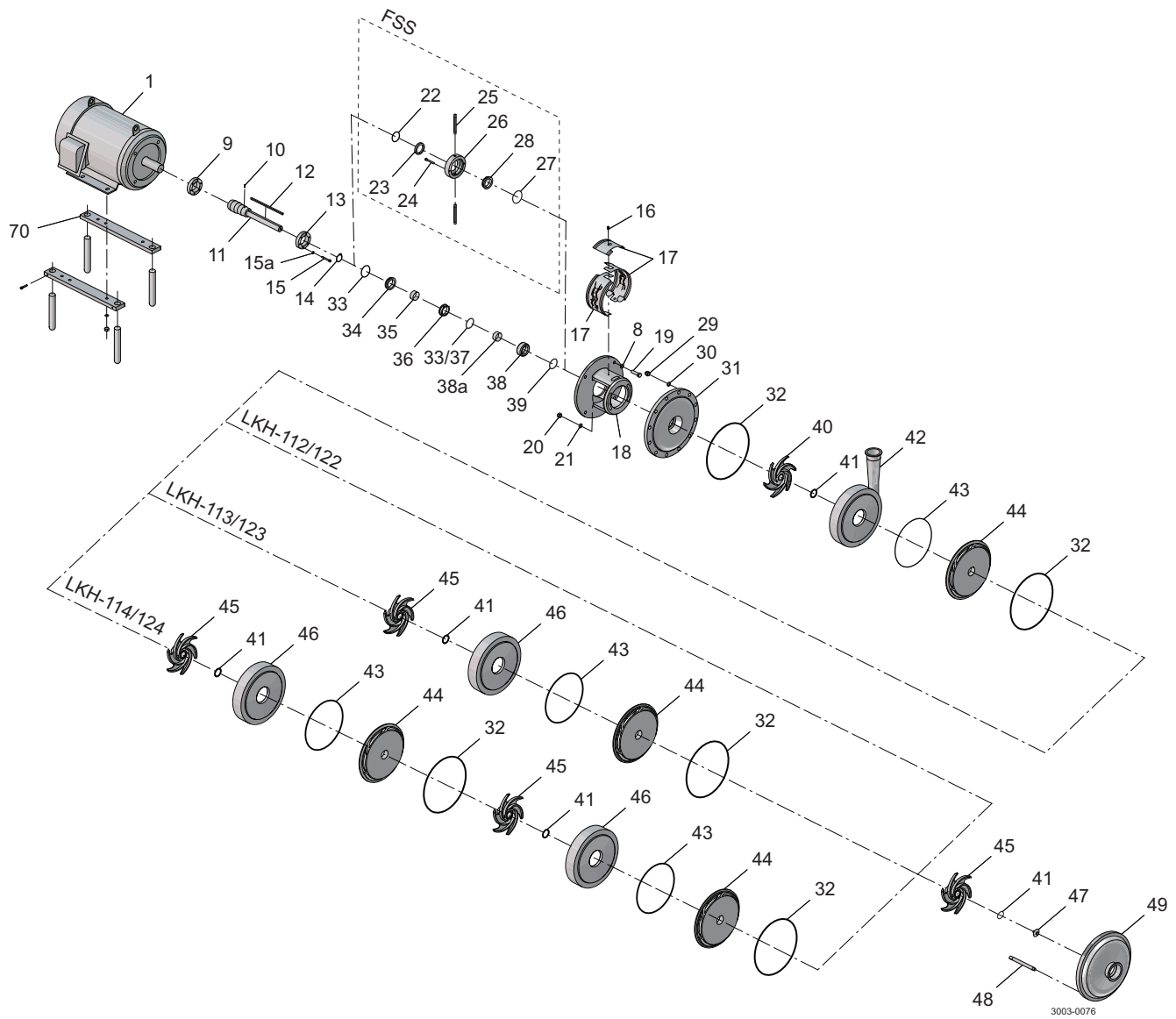
2022-01

Original manual

Table of contents

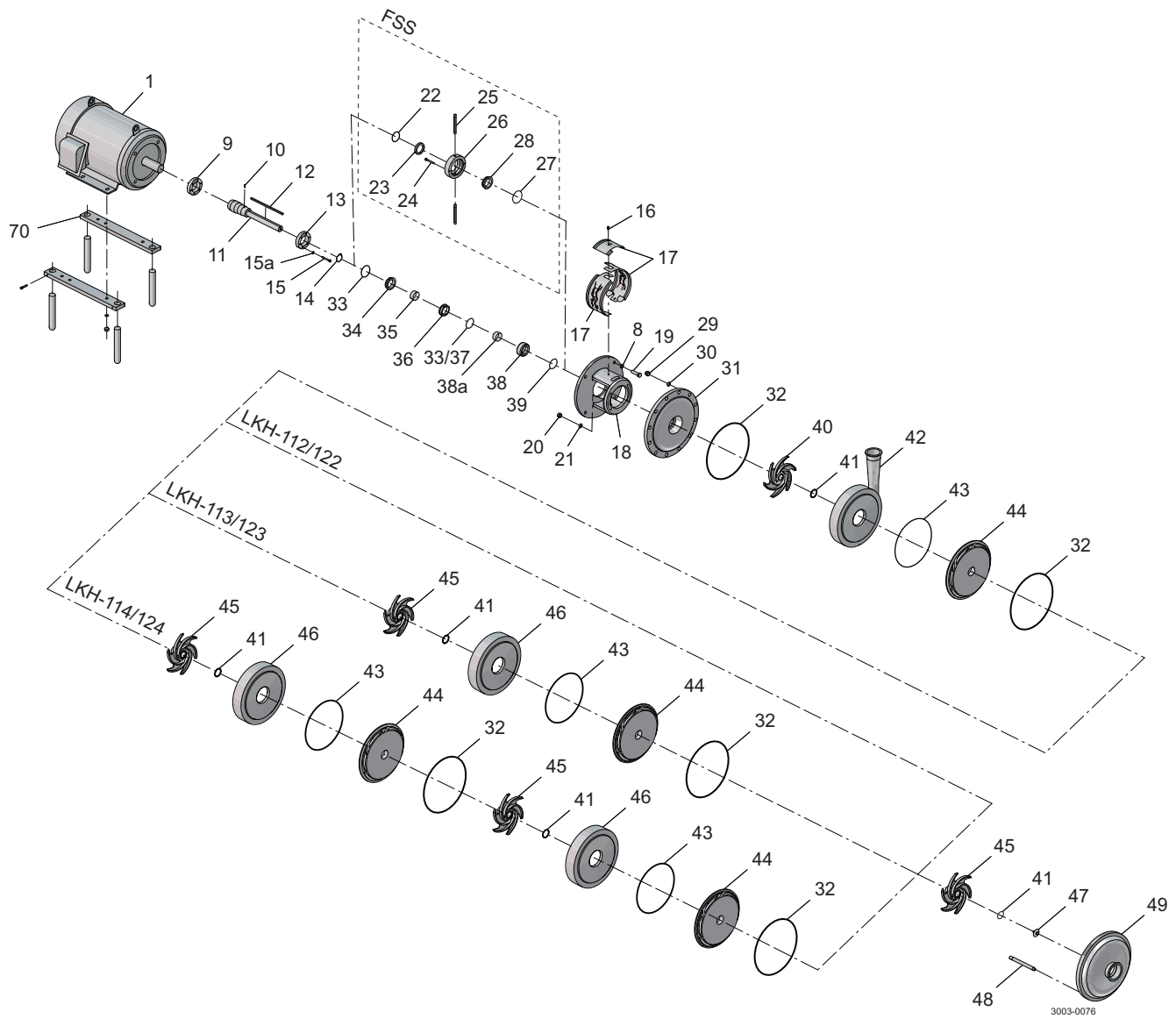
The information herein is correct at the time of issue but may be subject to change without prior notice

1. LKH - 112-114/112P-114P/122-124 US Multi-Stage, Product wetted parts	4
2. LKH - 112-114/112P-114P/122-124 US Multi-Stage, Motor dependend parts	10
3. LKH - 112-114/112P-114P/122-124 US Multi-Stage, Shaft seal	14



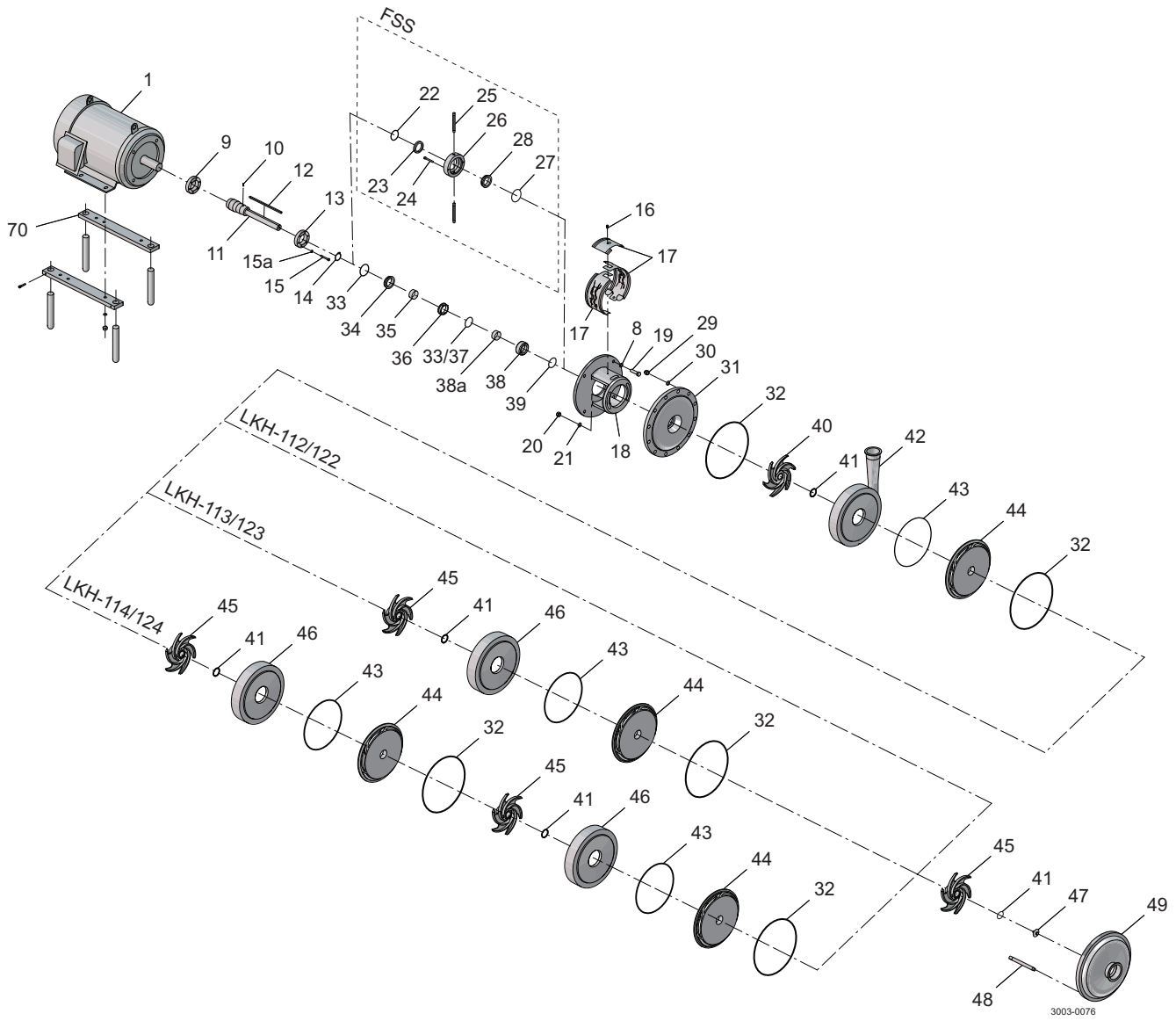
LKH - 112-114/112P-114P/122-124 US Multi-Stage, Product wetted parts

Pos	Qty	Denomination	LKH-112 7.5-20Hp	LKH-113 7.5-30Hp	LKH-114 7.5-30Hp
Pump Casing polished Ra ≤32					
42		Pump casing, clamp Tri-clamp	9612388904	9612388904	9612388904
Pump Cover polished Ra ≤ 32					
49		Pump Cover, clamp Tri-clamp	9612389304	9612389304	9612389304
29	6	Cap nut	9611992593	9611992593	9611992593
30	6	Washer	9611991887	9611991887	9611990676
48	6	Bolt	9612363501	9612363502	9612363503
43	□♦○■	1 O ring, EPDM, (standard)	9611992747		
		1 O ring, NBR	9611992748		
		1 O ring, FPM	9611992749		
		2 O ring, EPDM, (standard)		9611992747	
		2 O ring, NBR		9611992748	
		2 O ring, FPM		9611992749	
		3 O ring, EPDM, (standard)			9611992747
		3 O ring, NBR			9611992748
		3 O ring, FPM			9611992749
41	□♦○■	2 O ring, EPDM, (standard)	9611992750		
		2 O ring, NBR	9611992751		
		2 O ring, FPM	9611992752		
		3 O ring, EPDM, (standard)		9611992750	
		3 O ring, NBR		9611992751	
		3 O ring, FPM		9611992752	
		4 O ring, EPDM, (standard)			9611992750
		4 O ring, NBR			9611992751
		4 O ring, FPM			9611992752
32	□♦○■	2 O ring, EPDM, (standard)	9611992744		
		2 O ring, NBR	9611992745		
		2 O ring, FPM	9611992746		
		2 O ring, EPDM, (standard)		9611992744	
		2 O ring, NBR		9611992745	
		2 O ring, FPM		9611992746	
		2 O ring, EPDM, (standard)			9611992744
		2 O ring, NBR			9611992745
		2 O ring, FPM			9611992746
44		1 Guide vanes polished Ra ≤ 32	9612361303		
		2 Guide vanes polished Ra ≤ 32		9612361303	
		3 Guide vanes polished Ra ≤ 32			9612361303
46		1 Intermediate casing polished Ra ≤ 32		9612361003	
		2 Intermediate casing polished Ra ≤ 32			9612361003
40		1 Impeller back polished Ra ≤ 32	9612360403	9612360403	9612360403
45		1 Impeller polished Ra ≤ 32	9612360503		
		2 Impeller polished Ra ≤ 32		9612360503	
		3 Impeller polished Ra ≤ 32			9612360503
47		1 Impeller screw polished Ra ≤ 32	9612362703	9612362703	9612362703
31		1 Back plate polished Ra ≤ 32, (0-10 bar)	9612389212	9612389212	9612389212
20		2 Nut	9611990353	9611990353	9611990353
21		2 Washer	9611992559	9611992559	9611992559
12		1 Key	9611992756	9611992757	9611992758



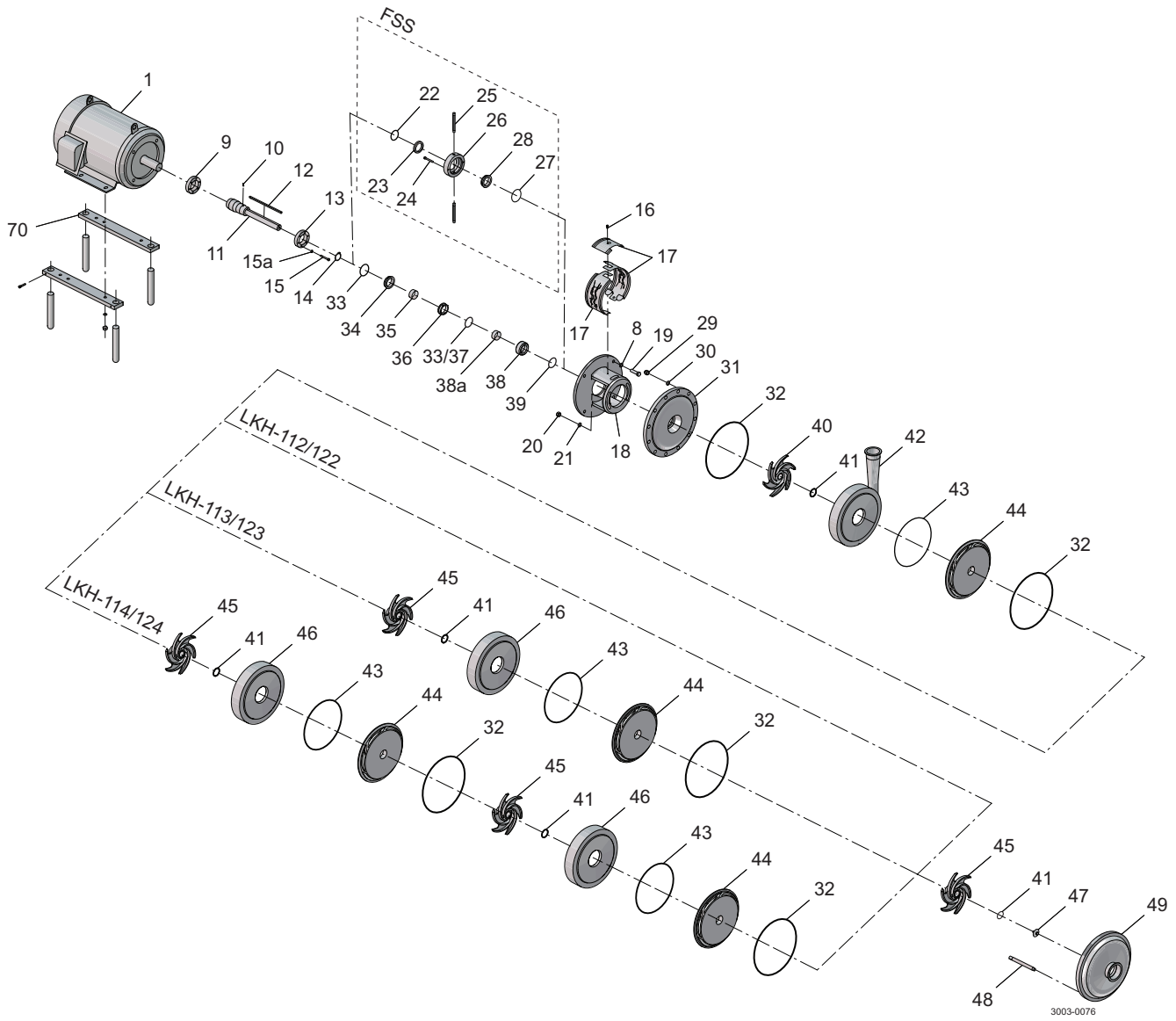
LKH - 112-114/112P-114P/122-124 US Multi-Stage, Product wetted parts

Pos	Qty	Denomination	LKH-112P 7.5-20Hp	LKH-113P 7.5-30Hp	LKH-114P 7.5-30Hp
Pump Casing polished Ra ≤32					
42		Pump casing, clamp Tri-clamp	9612388904	9612388904	9612388904
Pump Cover polished Ra ≤ 32					
49		Pump Cover, clamp Tri-clamp	9612389304	9612389304	9612389304
29	6	Cap nut	9611992593	9611992593	9611992593
30	6	Washer	9611991887	9611991887	9611990676
48	6	Bolt	9612363501	9612363502	9612363503
43	□♦○■	1 O ring, EPDM, (standard)	9611992747		
		1 O ring, NBR	9611992748		
		1 O ring, FPM	9611992749		
		2 O ring, EPDM, (standard)		9611992747	
		2 O ring, NBR		9611992748	
		2 O ring, FPM		9611992749	
		3 O ring, EPDM, (standard)			9611992747
		3 O ring, NBR			9611992748
		3 O ring, FPM			9611992749
41	□♦○■	2 O ring, EPDM, (standard)	9611992750		
		2 O ring, NBR	9611992751		
		2 O ring, FPM	9611992752		
		3 O ring, EPDM, (standard)		9611992750	
		3 O ring, NBR		9611992751	
		3 O ring, FPM		9611992752	
		4 O ring, EPDM, (standard)			9611992750
		4 O ring, NBR			9611992751
		4 O ring, FPM			9611992752
32	□♦○■	2 O ring, EPDM, (standard)	9611992744		
		2 O ring, NBR	9611992745		
		2 O ring, FPM	9611992746		
		2 O ring, EPDM, (standard)		9611992744	
		2 O ring, NBR		9611992745	
		2 O ring, FPM		9611992746	
		2 O ring, EPDM, (standard)			9611992744
		2 O ring, NBR			9611992745
		2 O ring, FPM			9611992746
44		1 Guide vanes polished Ra ≤ 32	9612361303		
		2 Guide vanes polished Ra ≤ 32		9612361303	
		3 Guide vanes polished Ra ≤ 32			9612361303
46		1 Intermediate casing polished Ra ≤ 32		9612361003	
		2 Intermediate casing polished Ra ≤ 32			9612361003
40		1 Impeller back polished Ra ≤ 32	9612360403	9612360403	9612360403
45		1 Impeller polished Ra ≤ 32	9612360503		
		2 Impeller polished Ra ≤ 32		9612360503	
		3 Impeller polished Ra ≤ 32			9612360503
47		1 Impeller screw polished Ra ≤ 32	9612362703	9612362703	9612362703
31		1 Back plate polished Ra ≤ 32, (> 10 bar)	9612389215	9612389215	9612389215
20		2 Nut	9611990353	9611990353	9611990353
21		2 Washer	9611992559	9611992559	9611992559
12		1 Key	9611992756	9611992757	9611992758



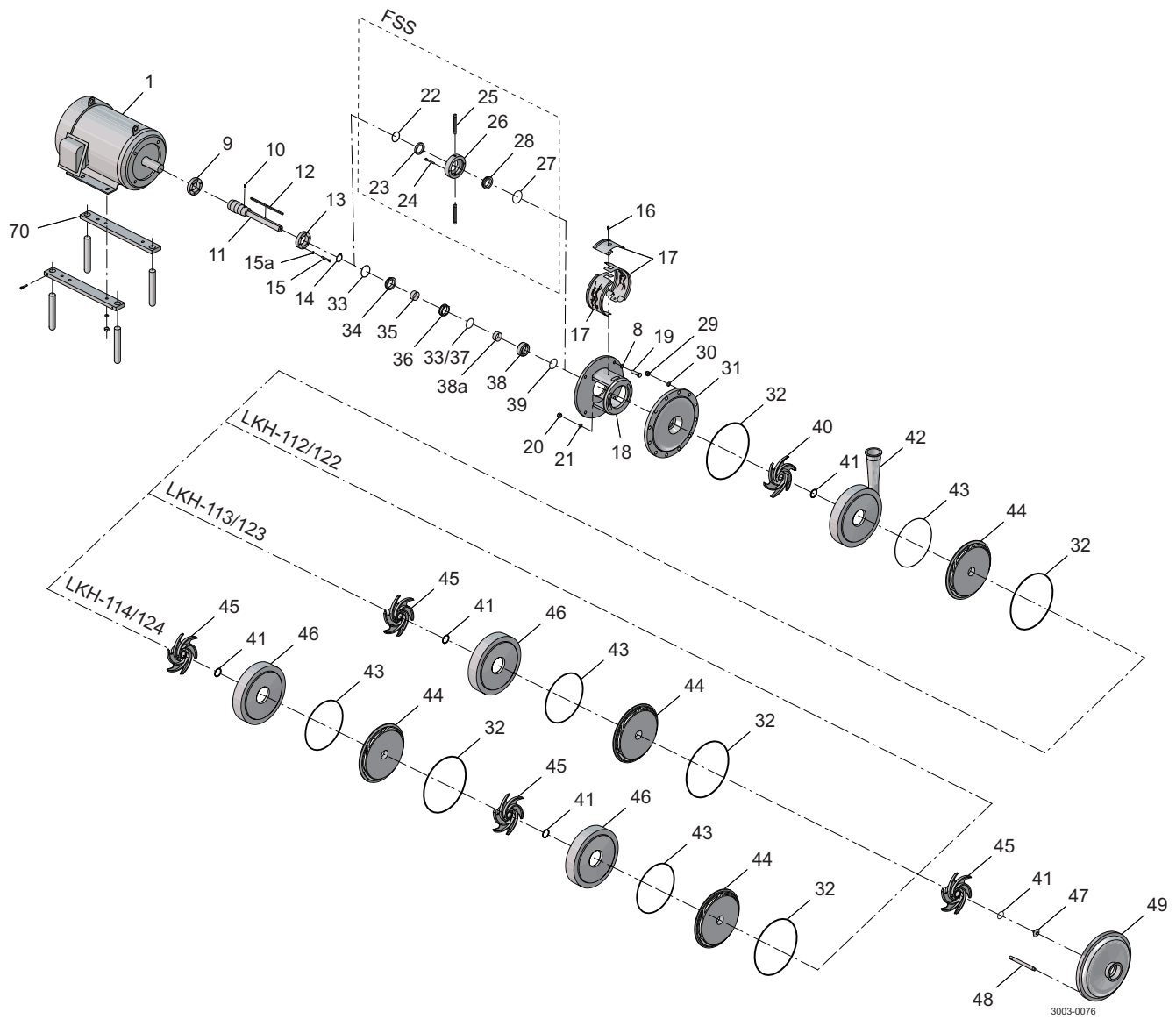
LKH - 112-114/112P-114P/122-124 US Multi-Stage, Product wetted parts

Pos	Qty	Denomination	LKH-122 40-60Hp	LKH-123 40-100Hp	LKH-124 10-100Hp
Pump Casing polished Ra ≤ 32					
42		Pump casing compl. Flange	9612592303	9612592303	9612592303
		Pump casing compl. Clamp	9612592304	9612592304	9612592304
Pump Cover polished Ra ≤ 32					
49		Pump cover compl. Flange	9612592403	9612592403	9612592403
		Pump cover compl. Clamp	9612592404	9612592404	9612592404
29	11	Cap nut	9611993685	9611993685	9611993685
30	11	Washer	9611993684	9611993684	9611993684
48	11	Bolt	9612363506	9612363507	9612363508
43	□♦○■	1 O ring, EPDM, (standard)	9611993582		
		1 O ring, NBR	9611993583		
		1 O ring, FPM			
		2 O ring, NBR		9611993582	
		2 O ring, FPM		9611993583	
		2 O ring, EPDM, (standard)			
		3 O ring, EPDM, (standard)			9611993582
		3 O ring, NBR			9611993583
		3 O ring, FPM			
41	□♦○■	2 O ring, EPDM, (standard)	9611993578		
		2 O ring, NBR	9611993579		
		2 O ring, FPM			
		3 O ring, EPDM, (standard)		9611993578	
		3 O ring, NBR		9611993579	
		3 O ring, FPM			
		4 O ring, EPDM, (standard)			9611993578
		4 O ring, NBR			9611993579
		4 O ring, FPM			
32	□♦○■	2 O ring, EPDM, (standard)	9611993574		
		2 O ring, NBR	9611993575		
		2 O ring, FPM			
		3 O ring, EPDM, (standard)		9611993574	
		3 O ring, NBR		9611993575	
		3 O ring, FPM			
		4 O ring, EPDM, (standard)			9611993574
		4 O ring, NBR			9611993575
		4 O ring, FPM			
44		1 Guide vanes polished Ra ≤ 32	9612590303		
		2 Guide vanes polished Ra ≤ 32		9612590303	
		3 Guide vanes polished Ra ≤ 32			9612590303
46		1 Intermediate casing polished Ra ≤ 32		9612590903	
		2 Intermediate casing polished Ra ≤ 32			9612590903
40		1 Impeller back polished Ra ≤ 32	9612590606	9612590606	9612590606
45		1 Impeller polished Ra ≤ 32	9612590605		
		2 Impeller polished Ra ≤ 32		9612590605	
		3 Impeller polished Ra ≤ 32			9612590605
47		1 Impeller screw polished Ra ≤ 32	9612591306	9612591306	9612591306
31		1 Back plate polished Ra ≤ 32, (> 10 bar)	9612389225	9612389225	9612389225
20		2 Nut	9611990353	9611990353	9611990353
21		2 Washer	9611992559	9611992559	9611992559
12		1 Key	9611993476	9611993476	9611993476



LKH - 112-114/112P-114P/122-124 US Multi-Stage, Motor dependend parts

Pos	Qty	Denomination	LKH- 112/113/114, LKH- 112P/113P/114P 7,5-10 Hp	LKH- 112/113/114, LKH- 112P/113P/114P 15-20 Hp	LKH- 112/113/114, LKH- 112P/113P/114P 25-30 Hp
9	1	Compression ring with thread	9612133606	9612133603	9612133603
13	1	Compression ring without thread	9612133706	9612133703	9612133703
15	6	Screw	9611993197	9611993198	9611993198
15a	6	Washer	9611993199	9611993199	9611993199
11	1	Shaft LKH112/LKH112P single shaft seal	9612389001	9612389101	9612389101
	1	Shaft LKH113/LKH113P single shaft seal	9612389002	9612389102	9612389102
	1	Shaft LKH114/LKH114P single shaft seal	9612389003	9612389103	9612389103
	1	Shaft incl. pin (pos.8) LKH112/LKH112P flushed shaft seal	9612389004	9612389104	9612389104
	1	Shaft incl. pin (pos.8) LKH113/LKH113P flushed shaft seal	9612389005	9612389105	9612389105
10	1	Shaft incl. pin (pos.8) LKH114/LKH114P flushed shaft seal	9612389006	9612389106	9612389106
	1	Connex pin	9611990622	9611990622	9611990622
14	1	Retaining ring	9611992307		
17	1	Safety guard set	9614077412	9614077409	9614077409
16	1	Screw for safety guard	9611993239	9611993239	9611993239
18	1	Adaptor	9612343001	9612343101	9612343102
19	4	Screw for adaptor	9611994413	9611994414	9611994414
8	4	Washer for adaptor	9611994417	9611994417	9611994417
70	1	Leg bracket	481663	481665	481669



LKH - 112-114/112P-114P/122-124 US Multi-Stage, Motor dependend parts

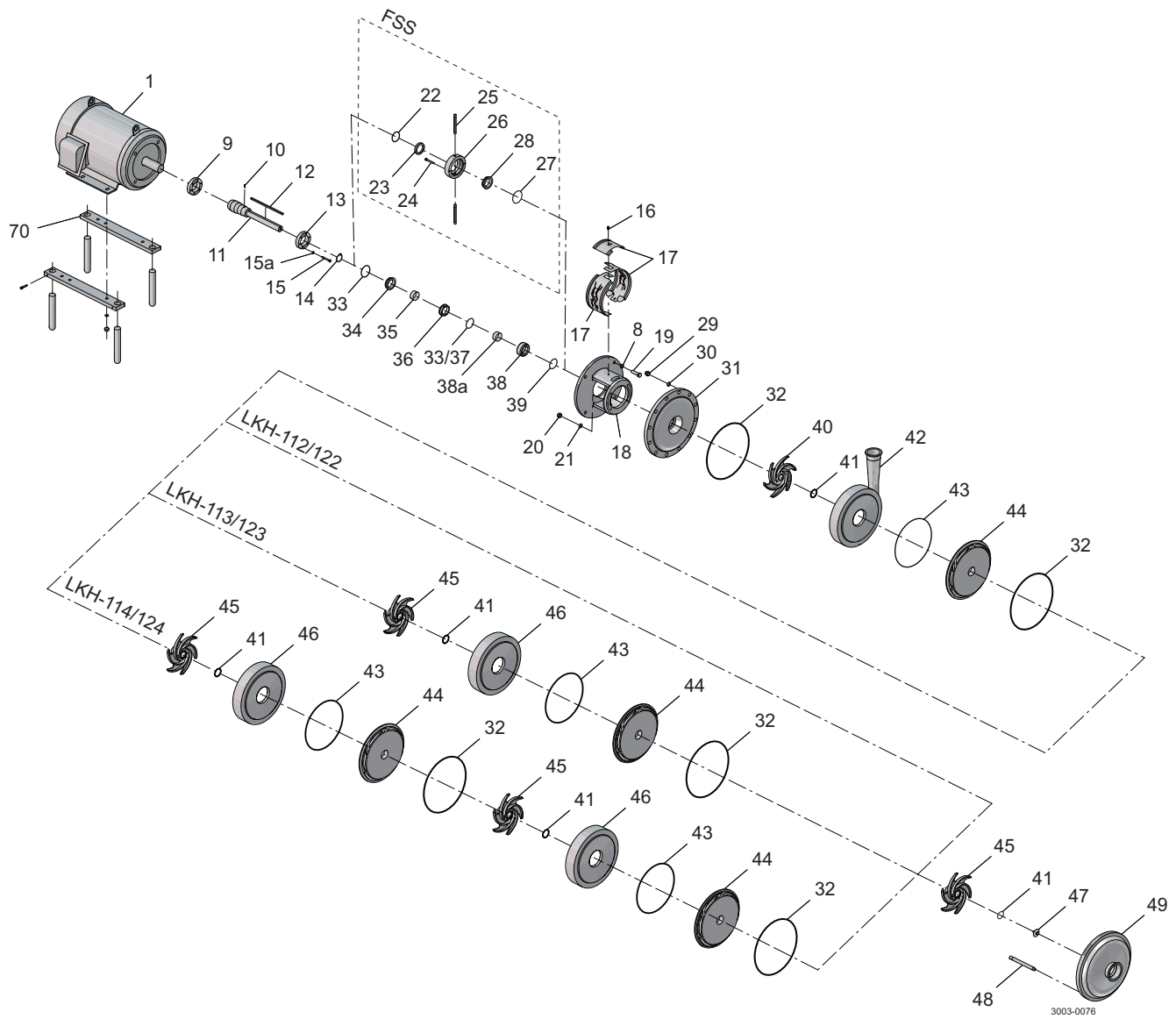
Pos	Qty	Denomination	LKH- 122/123/124 40-50 Hp	LKH- 122/123/124 60-75Hp	LKH- 122/123/124 100Hp
9	1	Compression ring with thread	9612133604	9612133604	9612133607
13	1	Compression ring without thread	9612133704	9612133704	9612133707
15	6	Screw	9611993198	9611993198	9611993266
15a	6	Washer	9611993199	9611993199	9611993199
11	1	Shaft incl. pin (pos.8) LKH122	9612601201	9612601201	
	1	Shaft incl. pin (pos.8) LKH123	9612601202	9612601202	9612601302
	1	Shaft incl. pin (pos.8) LKH124	9612601203	9612601203	9612601303
10	1	Connex pin	9611990622	9611990622	9611990622
17	1	Safety guard set	9614077409	9614077409	9614077409
16	1	Screw for safety guard	9611993239	9611993239	9611993239
18	1	Adaptor	9612342602	9612342602	9612342602
19	4	Screw for adaptor	9611994415	9611994415	9611994415
8	4	Washer for adaptor	9611994418	9611994418	9611994418
70	1	Leg bracket	9634056195	9634056195	9634056195

Pos	Qty	Denomination	7.5Hp	10Hp	15Hp	20Hp	25Hp	30Hp
1	1	Motor	213TC	215TC	254TC	256TC	284TSC	286TSC

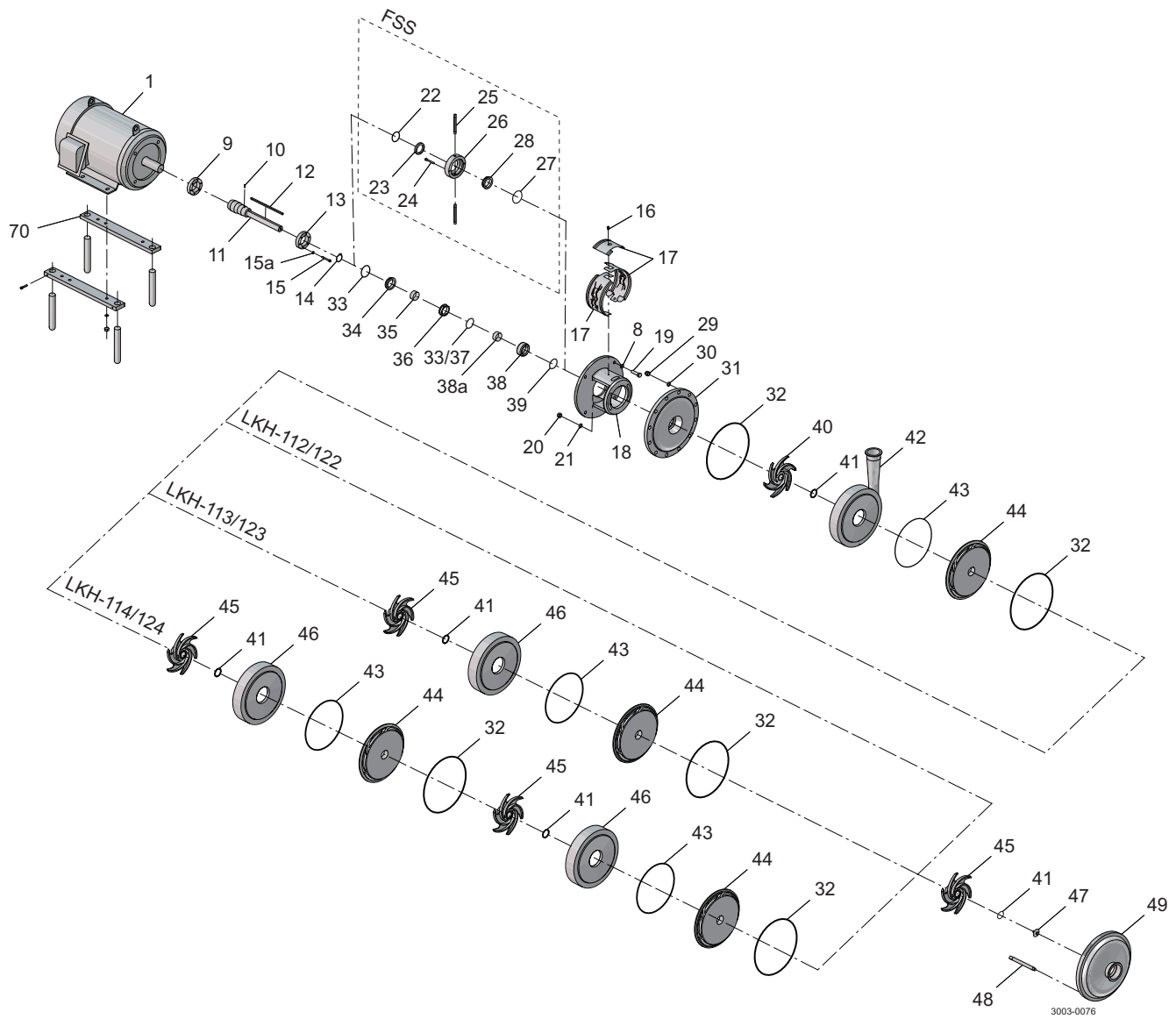
Pos	Qty	Denomination	40Hp	50Hp	60Hp	75Hp	100Hp
1	1	Motor	324TSC	326TSC	364TSC	365TSC	405TSC

3 ~, 50 Hz, 230VD/400-415VY - Standard ≤ 22 kW and 400-415VD/690VY Standard > 22 kW

3 ~, 60 Hz, 440-460VY - Standard ≤ 22 kW and 440-460VD Standard > 22 kW

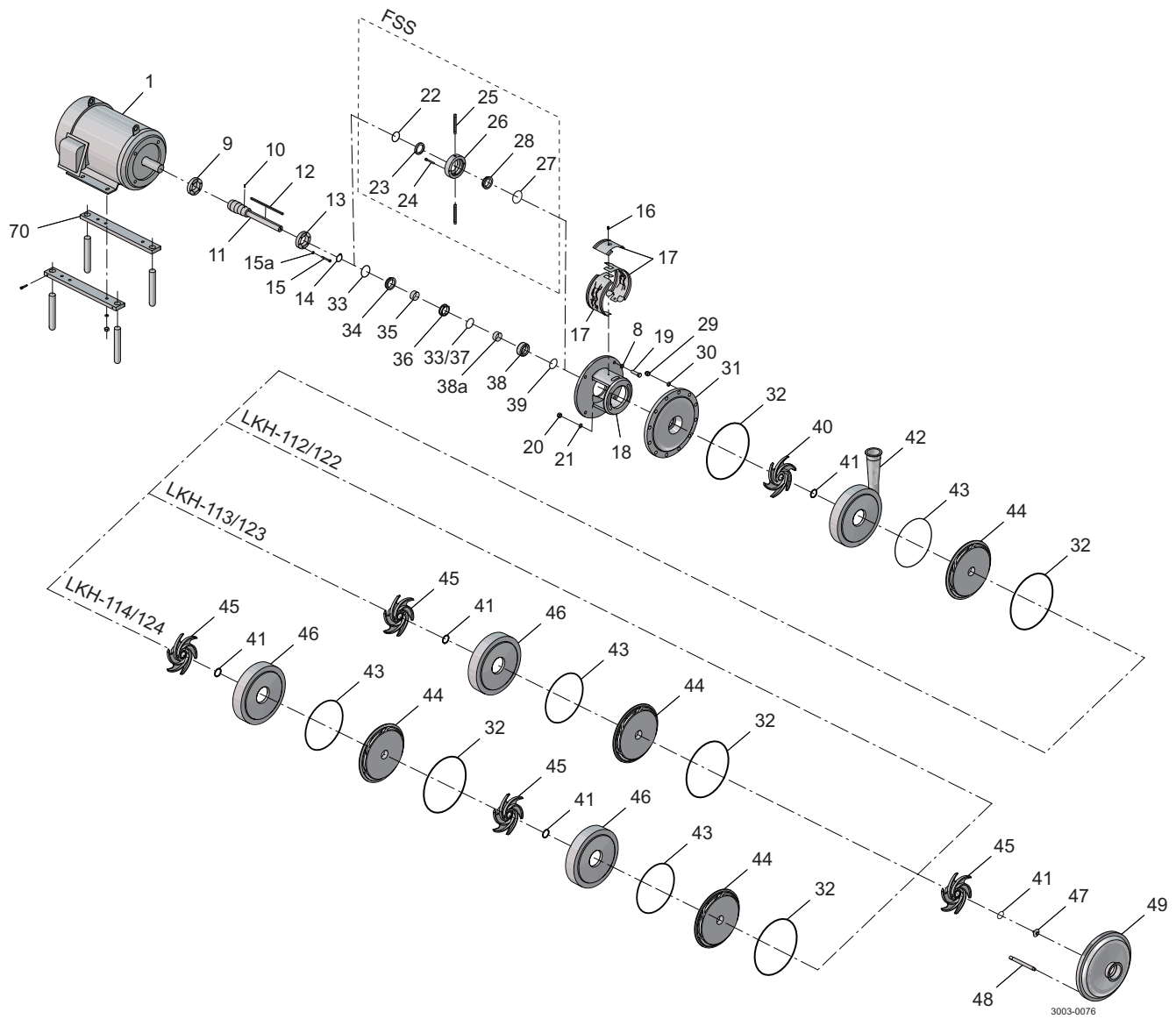


Pos	Qty	Denomination	LKH- 112/113/114, LKH- 112P/113P/114P	LKH- 122/123/124
60	1	Set of 8 springs for rotating sealhousing (incl. In pos 38)	9611995848	9611995849
35	1	Spacing ring	9612362501	9612362503
38	1	Rotating seal housing	9612362401	9612604501
Parts for flushed shaft seal				
22	◆○	1 O-ring EPDM	9611992754	9611993586
23	◆○	1 Sleeve		
24		2 Screw	9611990203	9611994038
25		2 Tube	9612358901	9612358909
26		1 Seal housing for flushed seal	9612362601	9612362603
27	◆○	1 O-ring, EPDM	9611992753	9611992753
28	◆○	1 Lip seal	9611992860	9611993587



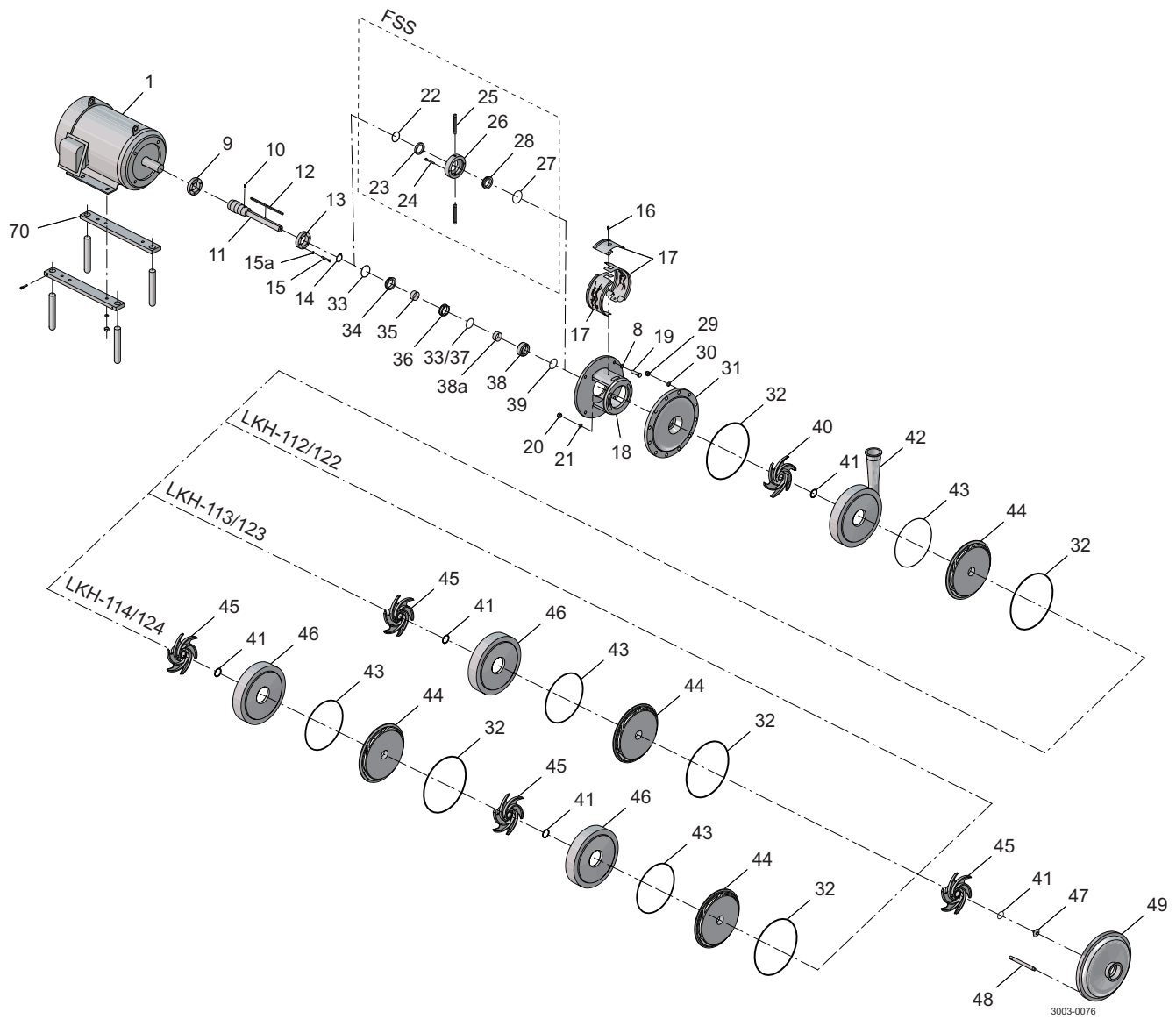
LKH - 112-114/112P-114P/122-124 US Multi-Stage, Shaft seal

Pos	Qty	Denomination	LKH- 112/113/114, LKH- 112P/113P/114P EPDM	LKH- 112/113/114, LKH- 112P/113P/114P NBR	LKH- 112/113/114, LKH- 112P/113P/114P FPM
Single shaft seal C/SIC					
	□○	Shaft seal complete	9612362201	9612362202	9612362203
33	1	O-ring, EPDM			
34	1	Stationary seal ring, Sic			
36	1	Rotating seal ring, Carbon			
37	1	Quad ring, EPDM			
38a	1	Support ring, PTFE			
39	1	Quad ring, EPDM			
Single shaft seal SIC/SIC					
	◆■	Shaft seal complete	9612362204	9612362205	9612362206
33	1	O-ring, EPDM			
34	1	Stationary seal ring, Sic			
36	1	Rotating seal ring, Carbon			
37	1	Quad ring, EPDM			
38a	1	Support ring, PTFE			
39	1	Quad ring, EPDM			



LKH - 112-114/112P-114P/122-124 US Multi-Stage, Shaft seal

Pos	Qty	Denomination	LKH- 122/123/124 EPDM	LKH- 122/123/124 NBR	LKH- 122/123/124 FPM
Single shaft seal C/SIC					
		□○ Shaft seal complete	9612602401	9612602402	
33	1	O-ring, EPDM			
34	1	Stationary seal ring, Sic			
36	1	Rotating seal ring, Carbon			
38a	1	Support ring, PTFE			
39	1	Quad ring, EPDM			
33	1	O-ring, EPDM			
Single shaft seal SIC/SIC					
		◆■ Shaft seal complete	9612602404	9612602405	
33	1	O-ring, EPDM			
34	1	Stationary seal ring, Sic			
36	1	Rotating seal ring, Carbon			
38a	1	Support ring, PTFE			
39	1	Quad ring, EPDM			
33	1	O-ring, EPDM			



		EPDM	NBR	FPM
Service kit for single shaft seal C/SIC				
□	Service kit C/SIC LKH-112/ LKH-112P	9611922096	9611922097	
	Service kit C/SIC LKH-113/ LKH-113P	9611922102	9611922103	
	Service kit C/SIC LKH-114/ LKH-114P	9611922108	9611922109	
	Service kit C/SIC LKH-122	9611922409	9611922410	
	Service kit C/SIC LKH-123	9611922934	9611922935	
	Service kit C/SIC LKH-124	9611922679	9611922680	
Service kit for single shaft seal SIC/SIC				
■	Service kit SIC/SIC LKH-112/ LKH-112P	9611922655	9611922656	
	Service kit SIC/SIC LKH-113/ LKH-113P	9611922661	9611922662	
	Service kit SIC/SIC LKH-114/ LKH-114P	9611922667	9611922668	
	Service kit SIC/SIC LKH-122	9611922673	9611922674	
	Service kit SIC/SIC LKH-123	9611922679	9611922680	
	Service kit SIC/SIC LKH-124	9611922685	9611922686	
Service kit for flushed shaft seal C/SIC				
○	Service kit C/SIC LKH-112/ LKH-112P	9611922099	9611922100	
	Service kit C/SIC LKH-113/ LKH-113P	9611922105	9611922106	
	Service kit C/SIC LKH-114/ LKH-114P	9611922111	9611922112	
	Service kit C/SIC LKH-122	9611922412	9611922413	
	Service kit C/SIC LKH-123	9611922937	9611922938	
	Service kit C/SIC LKH-124	9611922943	9611922944	
Service kit for flushed shaft seal SIC/SIC				
◆	Service kit SIC/SIC LKH-112/ LKH-112P	9611922658	9611922659	
	Service kit SIC/SIC LKH-113/ LKH-113P	9611922664	9611922665	
	Service kit SIC/SIC LKH-114/ LKH-114P	9611922670	9611922671	
	Service kit SIC/SIC LKH-122	9611922676	9611922677	
	Service kit SIC/SIC LKH-123	9611922682	9611922683	
	Service kit SIC/SIC LKH-124	9611922688	9611922689	

Parts marked with □◆○■ are included in the service kits.

Recommended Spare Parts: Service kits.

Conversion single to flushed shaft seal : Please order Flushed service kit + pos. 24+25+26

(900731/3)

How to contact Alfa Laval

Contact details for all countries are continually updated on our website.

Please visit www.alfalaval.com to access the information directly.

© Alfa Laval Corporate AB

This document and its contents is owned by Alfa Laval Corporate AB and protected by laws governing intellectual property and thereto related rights. It is the responsibility of the user of this document to comply with all applicable intellectual property laws. Without limiting any rights related to this document, no part of this document may be copied, reproduced or transmitted in any form or by any means (electronic, mechanical, photocopying, recording, or otherwise), or for any purpose, without the expressed permission of Alfa Laval Corporate AB. Alfa Laval Corporate AB will enforce its rights related to this document to the fullest extent of the law, including the seeking of criminal prosecution.