

# Homogenizer HL6

- Max. 203 (gal/min)
- Max. Homogenizing pressure up to 10,153 PSI
- Poppet valve and ball valve execution
- Max. motor power: 335 hp
- Weight with motor approx. 16,755 lbs
- Customized execution
- Control cabinet incl. PCL control and touchpanel
- Optional in aseptic execution with sterile water unit
- Designed and made in Germany

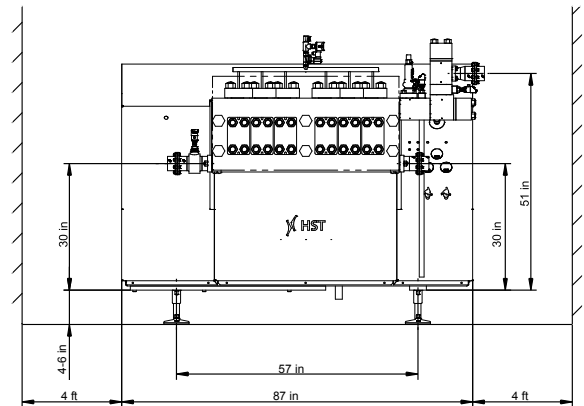


**Technical changes reserved!**

## Poppet valves

For low viscosity and slightly abrasive products

| Model    | Max. Pressure (PSI) | Max. Capacity (GPM) |
|----------|---------------------|---------------------|
| HL6-140T | 2,031               | 203                 |
| HL6-180T | 2,611               | 159                 |
| HL6-200T | 2,901               | 136                 |
| HL6-250T | 3,626               | 119                 |
| HL6-300T | 4,351               | 101                 |
| HL6-350T | 5,076               | 85                  |
| HL6-550T | 7,977               | 48                  |



## Ball valves

For high viscosity and abrasive products

| Model    | Max. Pressure (PSI) | Max. Capacity (GPM) |
|----------|---------------------|---------------------|
| HL6-150K | 2,176               | 167                 |
| HL6-200K | 2,901               | 132                 |
| HL6-250K | 3,626               | 112                 |
| HL6-300K | 4,351               | 97                  |
| HL6-350K | 5,076               | 81                  |
| HL6-550K | 7,977               | 46                  |
| HL6-700K | 10,153              | 37                  |

