

Axiflow STS Series Pumps

Standard Sizes Available:

STSC 50 (C-Face)

Suction/Discharge Connections - 1 1/2" to 3"

STS 70

Suction/Discharge Connections - 2" to 3"

STSC 70 (C-Face) (Not Shown)

Suction/Discharge Connections - 2" to 3"

STS 90

Suction/Discharge Connections - 2 1/2" to 4"

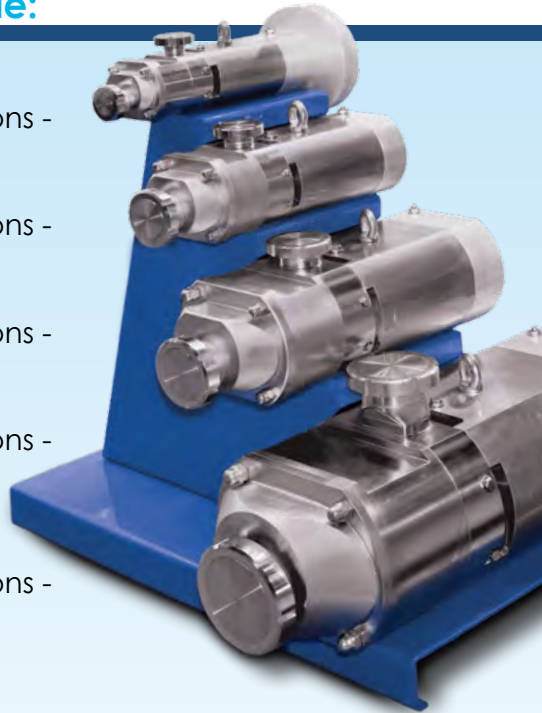
STSC 90 (C-Face) (Not Shown)

Suction/Discharge Connections - 2 1/2" to 4"

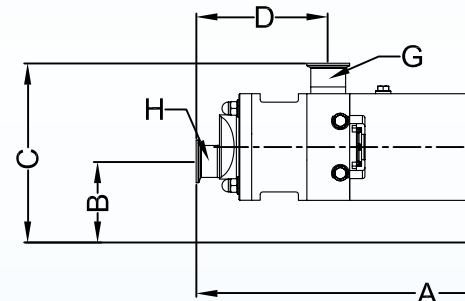
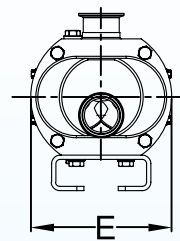
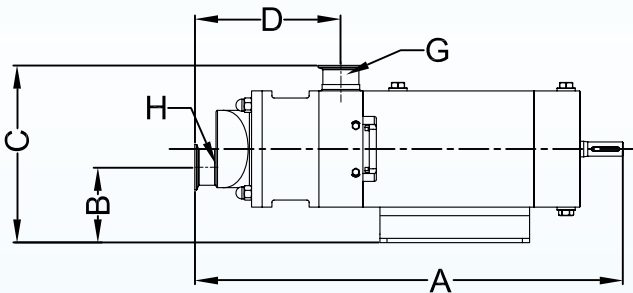
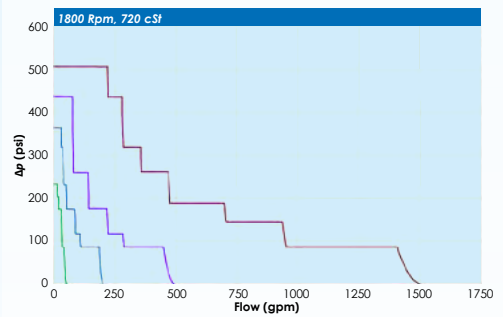
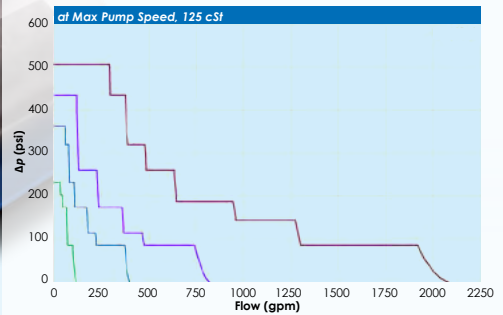
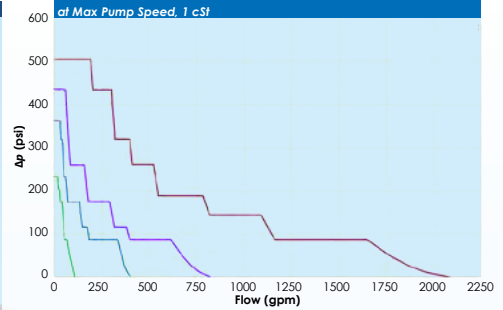
STS 125

Suction/Discharge Connections - 3" to 8"

***STSCA 70, STSA 70, STSCA 90 & STSA 90 Aseptic Version Pumps are also available. Standard Connections are Tri-Clamp. Other Connection Types such as I-Line, Q-Line, ANSI Flange, Bevel Seat are Available Upon Request.



Standard Pump Curves



Standard Coupling Mount Pumps

Pump Model	Nominal Capacity (Gpm)	Maximum Soft Solid Size (In)	Nominal Dimensions (In)					Top Connection Size	Endcover Connection Size	Weight (Lbs)
			A	B	C	D	E			
STS 70	0.4 - 250	3/4"	24.21	4.88	9.92	8.62	7.83	2" - 2 1/2"	2" - 3"	145
STS 90	4.4 - 550	1 1/8"	28.46	5.75	13.46	10.83	10.20	2 1/2" - 4"	2 1/2" - 4"	285
STS 125	30 - 1,440	1 5/8"	39.53	8.35	19.33	11.02	13.74	4" - 8"	4" - 8"	825

C-Face Mount Pumps

Pump Model	Nominal Capacity (Gpm)	Maximum Soft Solid Size (In)	Nominal	
			A	B
STSC 50	0.1 - 88	5/8"	19.49	4.25
STSC 70	0.4 - 250	3/4"	25.59	7.87
STSC 90	4.4 - 550	1 1/8"	30.91	5.83