

Spare Parts

Alfa Laval Toftejorg SaniJet 25



ESE02828-EN8 2018-02

Original manual

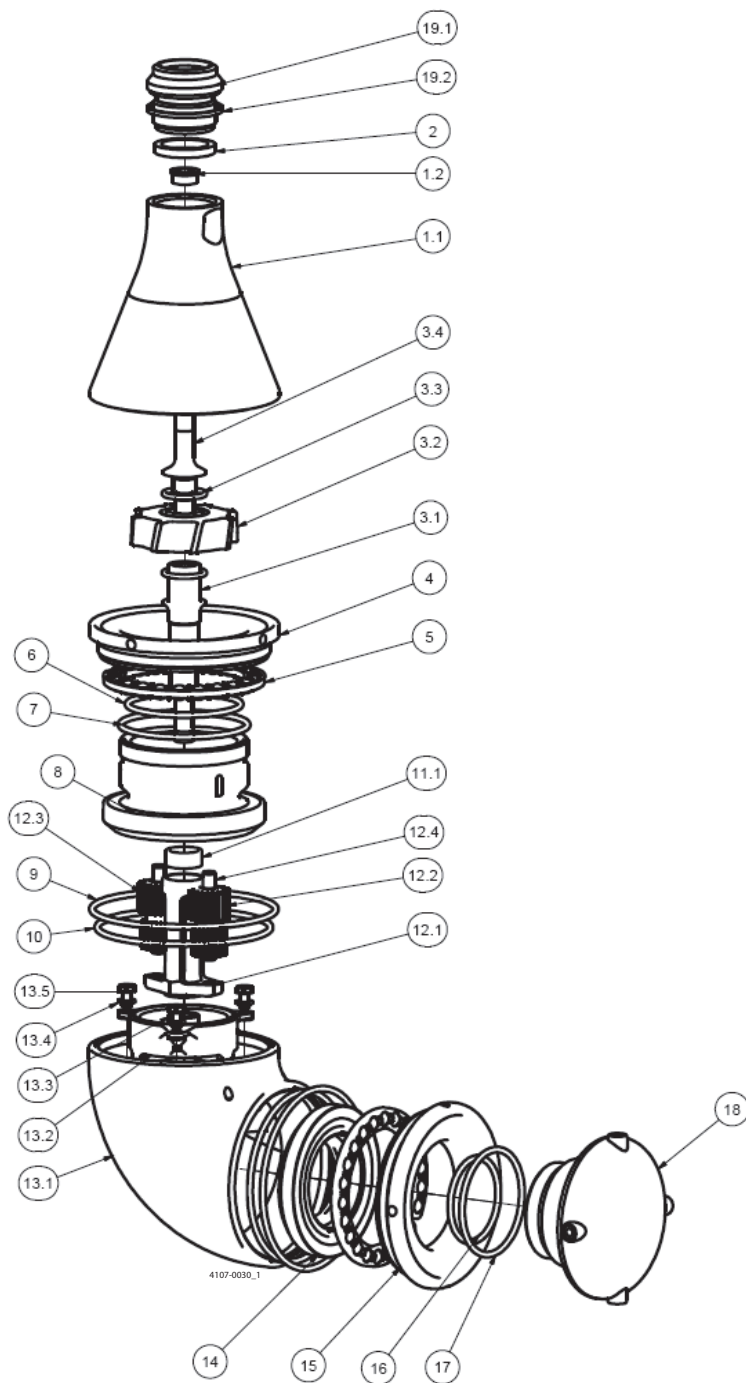


CSI

CONTACT CSI FOR MORE INFORMATION | CSIDESIGNS.COM | SALES@CSIDESIGNS.COM | 417.831.1411

The information herein is correct at the time of issue but may be subject to change without prior notice

- 1. SaniJet 25 for machines with -0x and -7x (after August 2012) 4
- 2. SaniJet 25 for machines with -5x, -6x, -8x and -9x (after August 2012) 6
- 3. SaniJet 25 FFKM/SS FFKM 8
- 4. SaniJet 25 duplex FFKM 10
- 5. SaniJet 25 service intervals and tools 12
 - 5.1. Service intervals 12
 - 5.2. Tools 13



SaniJet 25 for machines with -0x and -7x (after August 2012)

Pos	Qty	Denomination	Article no.	Materials	Remarks
Reference List of Parts, Alfa Laval Toftejorg SaniJet 25					
For machines with -0x and -7x (after August 2012)					
1.1	1	Cone	TE20J510	Stainless steel	Spare part
1.2	1	Bushing	TE20J514	Polymer	Wear part
2	1	Gasket	TE51T212	Elastomer	Wear part
3.1	1	Impeller Shaft	TE20J540	Stainless steel	Spare part
3.2	1	Impeller, (ø4.2mm nozzle)	TE20J544	Polymer	Spare part
	1	Impeller, (ø5.2mm nozzle)	TE20J545	Polymer	Spare part
	1	Impeller, (ø6.2mm nozzle)	TE20J546	Polymer	Spare part
3.3	2	O-ring	TE51T135	Elastomer	Wear part
3.4	1	Shaft end	TE20J542	Stainless steel	Spare part
4	1	Nut for stem	TE20J627	Stainless steel	Wear part
5	2	Ball retainer with balls	TE20G318	Polymer/Stain-	Wear part
				less steel	
6	1	O-ring	TE51T138	Elastomer	Wear part
7	1	O-ring	TE51T139	Elastomer	Wear part
8	1	Stem	TE20J624	Stainless steel	Wear part
9	2	O-ring	TE51T141	Elastomer	Wear part
10	2	O-ring	TE51T140	Elastomer	Wear part
11.1	1	Bushing	TE20J521	Polymer	Wear part
12	1	Planet gear	TE20J515	Polymer/Stain-	Wear part
				less steel	
13.1	1	Body, 1)		Stainless steel	N/A
13.2	1	Gear ring	TE20J506	Stainless steel	Spare part
13.3 ^o	1	Bearing for body	TE20J508	Polymer	Wear part
13.4	6	Seal ring	TE20J509	Polymer	Spare part
13.5	3	Screw for body assembly	TE20J550	Stainless steel	Spare part
14	1	Bevel gear	TE20J522	Stainless steel	Wear part
15	1	Nut for hub	TE20J638	Stainless steel	Wear part
16	1	O-ring	TE51T136	Elastomer	Wear part
17	1	O-ring	TE51T137	Elastomer	Wear part
18	1	Nozzle head, (ø4.2mm nozzle)	TE20J320	Stainless steel	Spare part
	1	Nozzle head, (ø5.2mm nozzle)	TE20J321	Stainless steel	Spare part
	1	Nozzle head, (ø6.2mm nozzle)	TE20J322	Stainless steel	Spare part
19.1 [□]	1	Welding adaptor, (1½" Dairy)	TE52D552	Stainless steel	Spare part
	1	Welding adaptor, (1" ANSI/Sch40)	TE52D554	Stainless steel	Spare part
	1	Welding adaptor, (NW40)	TE52D556	Stainless steel	Spare part
	1	Welding adaptor, (1½" BPE US/SWG)	TE52D558	Stainless steel	Spare part
19.2 ^o	1	Gasket	TE52D561	Polymer	Wear part

1): Pos. 13.1 is not sold as single Spare part component but only as part of a machine maintenance/repair order. For further information please contact Alfa Laval Customer Support.

Please note that some of the polymer parts are in PEEK, which is not resistant to concentrated sulfuric acid.

Service kits

Inspection kit	TE20J297
Minor service kit	TE20J298
Major service kit	TE20J299

Configuration according to delivery note/order.

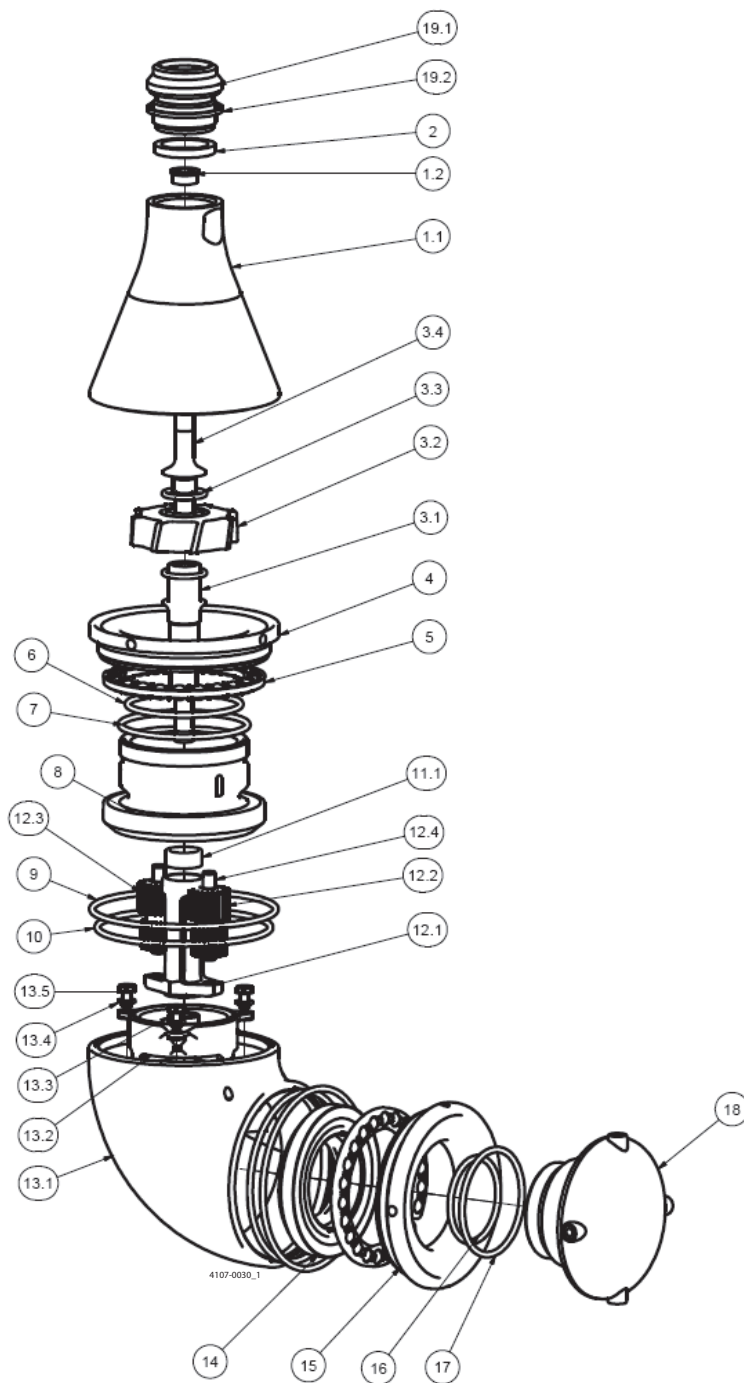
Parts marked with ^o are included in the Inspection Kit: TE20J297

Parts marked with [□] are included in the Minor Service Kit: TE20J298

Parts marked with • are included in the Major Service Kit: TE20J299

The machine can be delivered with ATEX certification.





SaniJet 25 for machines with -5x, -6x, -8x and -9x (after August 2012)

Pos	Qty	Denomination	Article no.	Materials	Remarks
Parts list, Toftejorg SaniJet 25					
For machines with -5x, -6x, -8x and -9x (after August 2012)					
1.1	1	Cone	TE20J510	Stainless steel	Spare part
1.2	1	Bushing	TE20J514	Polymer	Wear part
2	1	Gasket	TE51T212	Elastomer	Wear part
3.1	1	Impeller Shaft	TE20J540	Stainless steel	Spare part
3.2	1	Impeller, (ø4.2mm nozzle)	TE20J544	Polymer	Spare part
	1	Impeller, (ø5.2mm nozzle)	TE20J545	Polymer	Spare part
	1	Impeller, (ø6.2mm nozzle)	TE20J546	Polymer	Spare part
3.3	2	O-ring	TE51T135	Elastomer	Wear part
3.4	1	Shaft end	TE20J542	Stainless steel	Spare part
4	1	Nut for stem	TE20J627	Stainless steel	Wear part
5	2	Ball retainer with balls	TE20G318	Polymer/Stain- less steel	Wear part
6	1	O-ring	TE51T194	Elastomer	Wear part
7	1	O-ring	TE51T139	Elastomer	Wear part
8	1	Stem	TE20J624	Stainless steel	Wear part
9	2	O-ring	TE51T196	Elastomer	Wear part
10	2	O-ring	TE51T195	Elastomer	Wear part
11.1	1	Bushing	TE20J521	Polymer	Wear part
12	1	Planet gear	TE20J515	Polymer/Stain- less steel	Wear part
13.1	1	Body, 1)		Stainless steel	N/A
13.2	1	Gear ring	TE20J506	Stainless steel	Spare part
13.3	1	Bearing for body	TE20J508	Polymer	Wear part
13.4	6	Seal ring	TE20J509	Polymer	Spare part
13.5	3	Screw for body assembly	TE20J550	Stainless steel	Spare part
14	1	Bevel gear	TE20J522	Stainless steel	Wear part
15	1	Nut for hub	TE20J638	Stainless steel	Wear part
16	1	O-ring	TE51T192	Elastomer	Wear part
17	1	O-ring	TE51T193	Elastomer	Wear part
18	1	Nozzle head, (ø4.2mm nozzle)	TE20J320	Stainless steel	Spare part
	1	Nozzle head, (ø5.2mm nozzle)	TE20J321	Stainless steel	Spare part
	1	Nozzle head, (ø6.2mm nozzle)	TE20J322	Stainless steel	Spare part
19.1	1	Welding adaptor, (1½" Dairy)	TE52D552	Stainless steel	Spare part
	1	Welding adaptor, (1" ANSI/Sch40)	TE52D554	Stainless steel	Spare part
	1	Welding adaptor, (NW40)	TE52D556	Stainless steel	Spare part
	1	Welding adaptor, (1½" BPE US/SWG)	TE52D558	Stainless steel	Spare part
19.2	1	Gasket	TE52D561	Polymer	Wear part

1): Pos. 13.1 is not sold as single spare part component but only as part of a machine maintenance/repair order. For further information please contact Alfa Laval Customer Support.

Please note that some of the polymer parts are in PEEK, which is not resistant to concentrated sulfuric acid.

Service kits

Inspection kit*	TE20J29701
Minor service kit*	TE20J29801
Major service kit*	TE20J29901

Configuration according to delivery note/order.

Parts marked with ● are included in the Inspection Kit: TE20J29701*

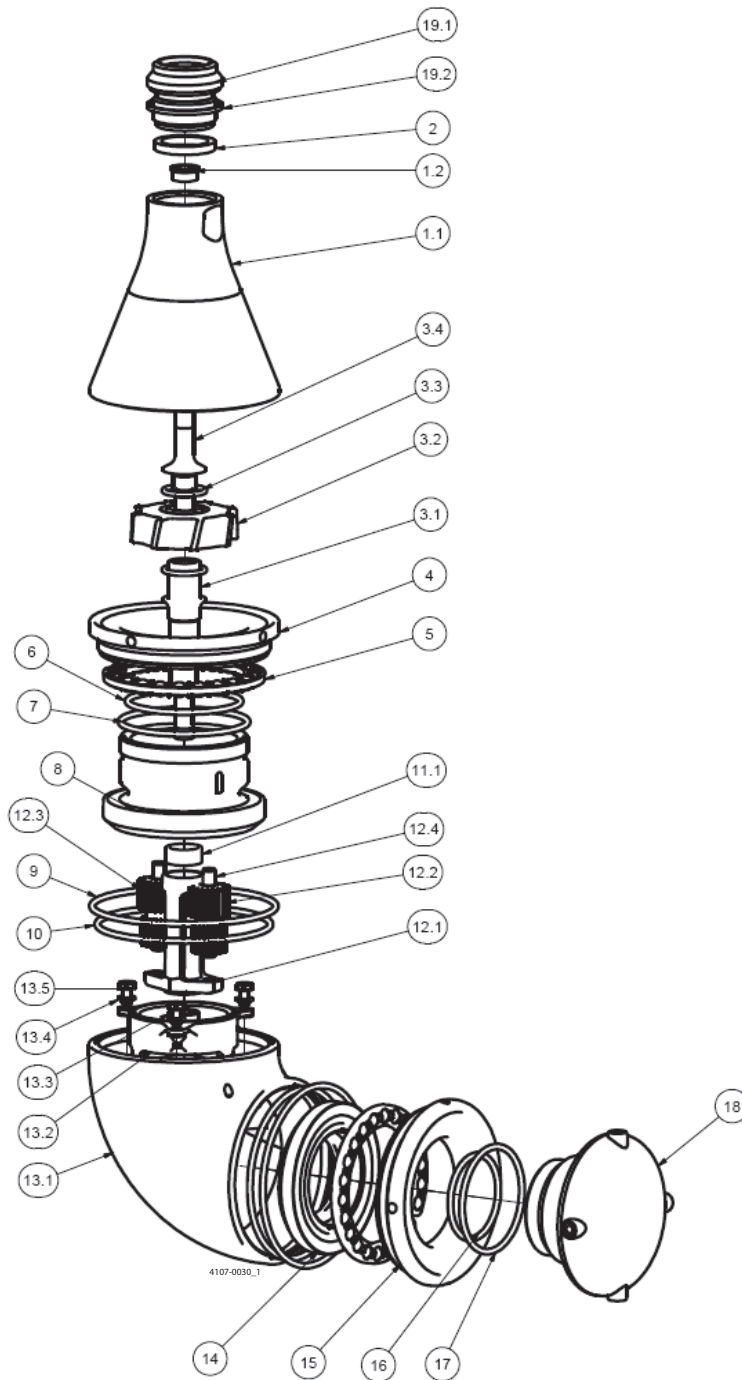
Parts marked with ○ are included in the Minor Service Kit: TE20J29801*

Parts marked with ◐ are included in the Major Service Kit: TE20J29901*

* with Q-Doc and USP VI certificate

The machine can be delivered with ATEX certification.





Pos	Qty	Denomination	Article no.	Materials	Remarks
Reference List of Parts, Alfa Laval Toftejorg SaniJet 25 FFKM					
1.1	1	Cone	TE20J510	Stainless steel	Spare part
1.2	1	Bushing	TE20J514	Polymer	Wear part
2	1	Gasket	9690011301	Elastomer	Wear part
				(FFKM)	
3.1	1	Impeller Shaft	TE20J540	Stainless steel	Spare part
3.2	1	Impeller, (ø4.2mm nozzle)	TE20J544	Polymer	Spare part
	1	Impeller, (ø5.2mm nozzle)	TE20J545	Polymer	Spare part
	1	Impeller, (ø6.2mm nozzle)	TE20J546	Polymer	Spare part
3.3	2	O-ring	9690010501	Elastomer	Wear part
				(FFKM)	
3.4	1	Shaft end	TE20J542	Stainless steel	Spare part
4	1	Nut for stem	TE20J627	Stainless steel	Wear part
5	2	Ball retainer with balls	TE20G318	Polymer/Stain-	Wear part
				less steel	
6	1	O-ring	9690010701	Elastomer	Wear part
				(FFKM)	
7	1	O-ring	9690010601	Elastomer	Wear part
				(FFKM)	
8	1	Stem	TE20J624	Stainless steel	Wear part
9	2	O-ring	9690010801	Elastomer	Wear part
				(FFKM)	
10	2	O-ring	9690010901	Elastomer	Wear part
				(FFKM)	
11.1	1	Bushing	TE20J521	Polymer	Wear part
12	1	Planet gear	TE20J515	Polymer/Stain-	Wear part
				less steel	
13.1	1	Body, 1)		Stainless steel	N/A
13.2	1	Gear ring	TE20J506	Stainless steel	Spare part
13.3	1	Bearing for body	TE20J508	Polymer	Wear part
13.4	6	Seal ring	TE20J509	Polymer	Spare part
13.5	3	Screw for body assembly	TE20J550	Stainless steel	Spare part
14	1	Bevel gear	TE20J522	Stainless steel	Wear part
15	1	Nut for hub	TE20J638	Stainless steel	Wear part
16	1	O-ring	9690011001	Elastomer	Wear part
				(FFKM)	
17	1	O-ring	9690011101	Elastomer	Wear part
				(FFKM)	
18	1	Nozzle head, (ø4.2mm nozzle)	TE20J320	Stainless steel	Spare part
	1	Nozzle head, (ø5.2mm nozzle)	TE20J321	Stainless steel	Spare part
	1	Nozzle head, (ø6.2mm nozzle)	TE20J322	Stainless steel	Spare part
19.1	1	Welding adaptor, (1½" Dairy)	TE52D552	Stainless steel	Spare part
	1	Welding adaptor, (1" ANSI/Sch40)	TE52D554	Stainless steel	Spare part
	1	Welding adaptor, (NW40)	TE52D556	Stainless steel	Spare part
	1	Welding adaptor, (1½" BPE US/SWG)	TE52D558	Stainless steel	Spare part
19.2	1	Gasket	TE52D561	Polymer	Wear part

1): Pos. 13.1 is not sold as single spare part component but only as part of a machine maintenance/repair order. For further information please contact Alfa Laval Customer Support.

Please note that some of the polymer parts are in PEEK, which is not resistant to concentrated sulfuric acid.

Service kits

Inspection kit*	9690012601
Minor service kit*	9690012701
Major service kit*	9690012801

Configuration according to delivery note/order.

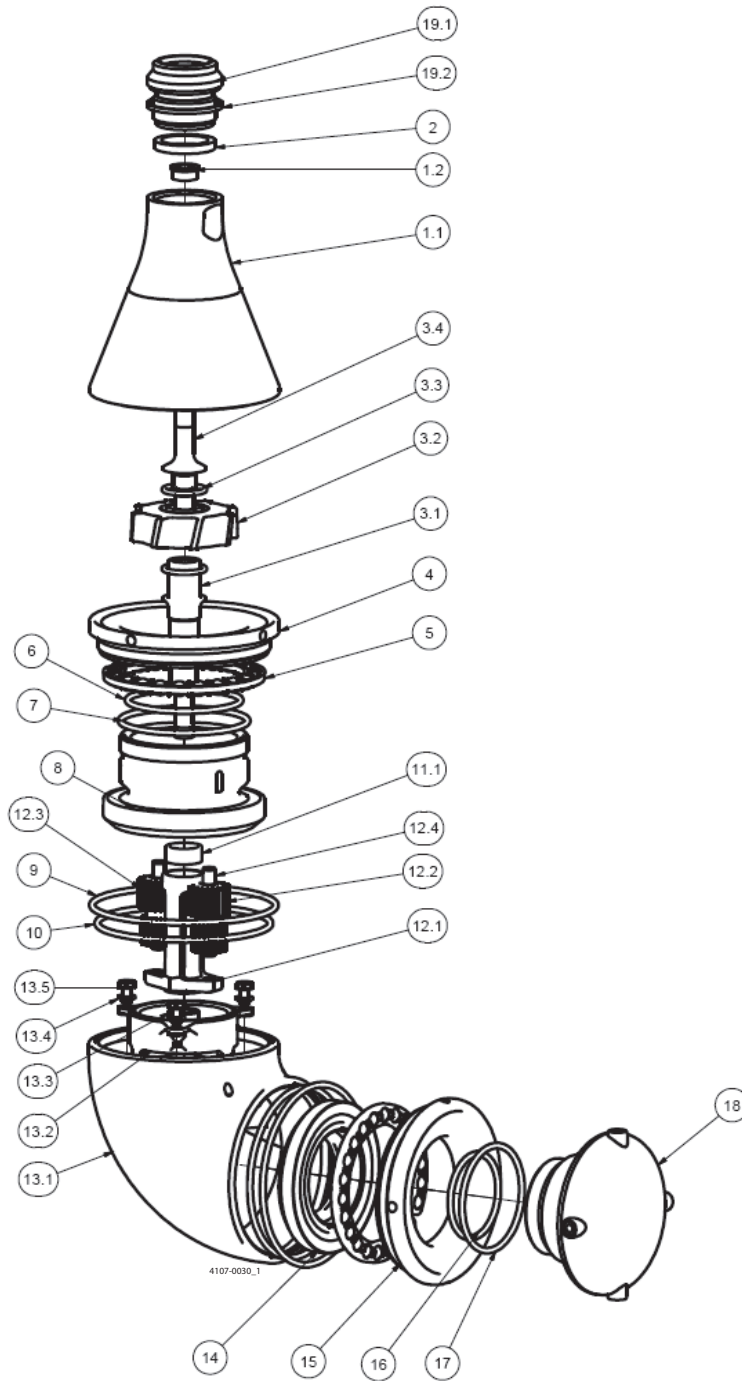
Parts marked with ♦ are included in the Inspection Kit: 9690012601*

Parts marked with ⊕ are included in the Minor Service Kit: 9690012701*

Parts marked with ○ are included in the Major Service Kit: 9690012801*

* with Q-Doc and USP VI certificate

The machine can be delivered with ATEX certification.



4107-0030_1

Exploded view drawing

Pos	Qty	Denomination	Article no.	Materials	Remarks
Reference List of Parts, Alfa Laval Toftejorg SaniJet 25 Duplex FFKM					
1.1	1	Cone, welded	9690008401	SD Steel ²⁾	Spare part
1.2	1	Bushing	TE20J514	Polymer	Wear part
2	1	Gasket, f. 1" cones, Sani. Con.	9690011301	FFKM	Wear part
3.1	1	Impeller Shaft	9690009601	SD Steel ²⁾	Spare part
3.2	1	Impeller, (ø4.2mm nozzle)	TE20J544	Polymer	Spare part
	1	Impeller, (ø5.2mm nozzle)	TE20J545	Polymer	Spare part
	1	Impeller, (ø6.2mm nozzle)	TE20J546	Polymer	Spare part
3.3	2	O-ring	9690010501	FFKM	Wear part
3.4	1	Shaft end	9690008501	SD Steel ²⁾	Spare part
4	1	Nut for stem	9690008601	SD Steel ²⁾	Wear part
5	2	Ball retainer with balls	TE20H318	Polymer/hastel-loy	Wear part
6	1	O-ring	9690010701	FFKM	Wear part
7	1	O-ring	9690010601	FFKM	Wear part
8	1	Stem	9690009801	SD Steel ²⁾	Wear part
9	2	O-ring	9690010801	FFKM	Wear part
10	2	O-ring	9690010901	FFKM	Wear part
11.1	1	Bushing	TE20J521	Polymer	Wear part
12	1	Planet gear assembly	9690012901	Polymer/SD Steel ²⁾	Wear part
13.1	1	Body, ¹⁾		SD Steel ²⁾	N/A
13.2	1	Gear ring	9690010001	SD Steel ²⁾	Spare part
13.3	1	Bearing for body	TE20J508	Polymer	Wear part
13.4	6	Seal ring	TE20J509	Polymer	Spare part
13.5	3	Screw for body assembly	9690008901	SD Steel ²⁾	Spare part
14	1	Bevel gear	9690010201	SD Steel ²⁾	Wear part
15	1	Nut for hub	9690009001	SD Steel ²⁾	Wear part
16	1	O-ring	9690011001	FFKM	Wear part
17	1	O-ring	9690011101	FFKM	Wear part
18	1	Nozzle head, (ø4.2mm nozzle)	9690010301	SD Steel ²⁾	Spare part
	1	Nozzle head, (ø5.2mm nozzle)	9690010302	SD Steel ²⁾	Spare part
	1	Nozzle head, (ø6.2mm nozzle)	9690010303	SD Steel ²⁾	Spare part
19.1	1	Welding adapter, 1"BSP/1½"BPE pipe compl.	9690011201	SD Steel ²⁾	Spare part
	1	Welding adapter, Welding adaptor 1"BSP/1½"BPE pipe	9690009101	SD Steel ²⁾	Spare part
19.2	1	Gasket	TE52D561	Polymer	Wear part

¹⁾: Pos. 13.1 is not sold as single Spare part component but only as part of a machine maintenance/repair order. For further information please contact Alfa Laval Customer Support.

²⁾: SD Steel = Super Duplex Steel.

Please note that some of the polymer parts are in PEEK, which is not resistant to concentrated sulfuric acid.

Service kits

Inspection kit*	9690012601
Minor service kit*	9690012702
Major service kit*	9690012802

Configuration according to delivery note/order.

Parts marked with ♦ are included in the Inspection Kit: 9690012601*

Parts marked with ⚙ are included in the Minor Service Kit: 9690012702*

Parts marked with ○ are included in the Major Service Kit: 9690012802*

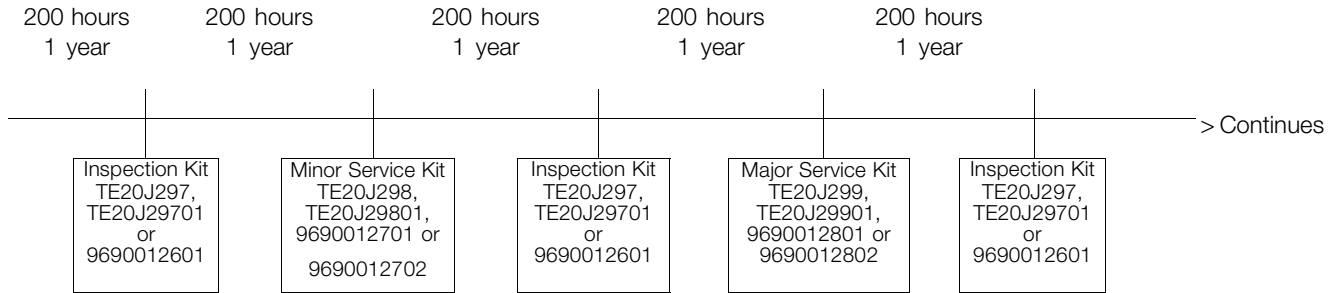
* with Q-Doc and USP VI certificate

The machine can be delivered with ATEX certification.

5 SaniJet 25 service intervals and tools

5.1 Service intervals

Service Intervals

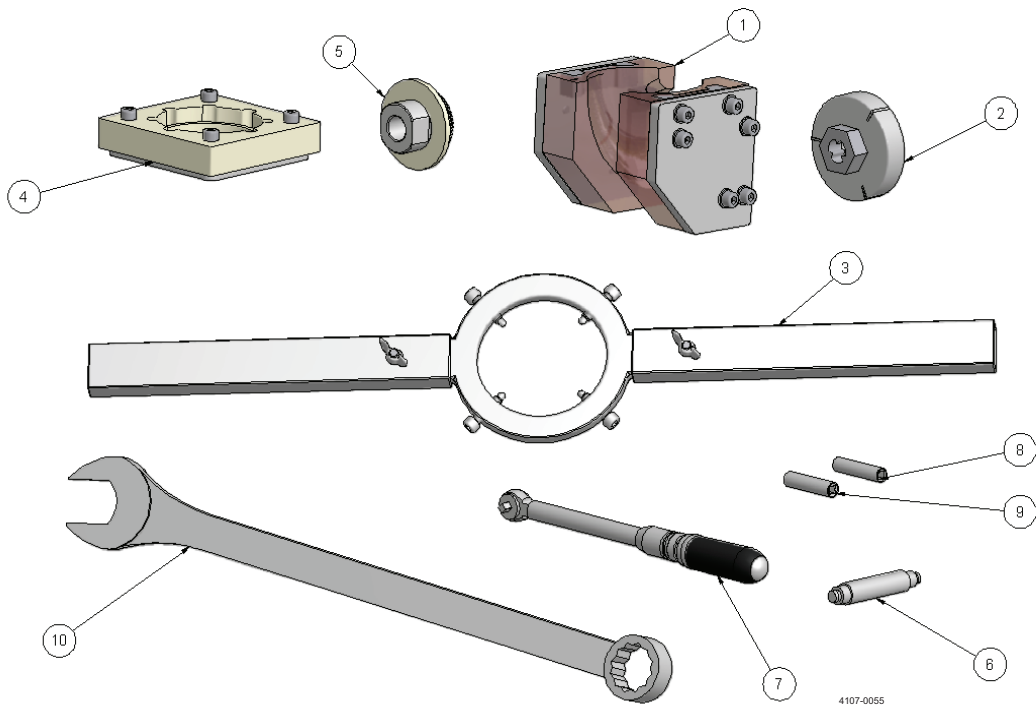


5.2 Tools

Pos	Qty	Denomination	Item no.
		Standard tool kit for Alfa Laval Toftejorg SaniJet 25	TE81B155
Consisting of:			
1	1	Fixture tool f. body	TE20J386
2	1	Fixture tool f. hub and turbine	TE20J392
3	1	Ring key f. nuts (dismountable)	TE20J393
4	1	Fixture tool f. nozzle	TE20J366
5	1	Fixture tool f. stem	TE20J360
6	1	Drift f. bushings	TE81B139
7	1	Torque wrench (4-24 Nm) – ¼"	TE81B156
8	1	NV8 socket, long, ¼"	TE81B157
9	1	NV9 socket, long, ¼"	TE81B158
10	1	NV36 Ring/Fork key	TE81B159

- + Bench vise (jaw opening > 160 mm)
- + Hammer (soft - plastic)
- + 3-5 mm standard drift
- + brush for applying food grade/FDA compliant grease

All tool surfaces that come into contact with the machine shall be of a material that is not corroded and free of imperfections and soil.



How to contact Alfa Laval

Contact details for all countries are continually updated on our website.

Please visit www.alfalaval.com to access the information directly.

© Alfa Laval Corporate AB

This document and its contents is owned by Alfa Laval Corporate AB and protected by laws governing intellectual property and thereto related rights. It is the responsibility of the user of this document to comply with all applicable intellectual property laws. Without limiting any rights related to this document, no part of this document may be copied, reproduced or transmitted in any form or by any means (electronic, mechanical, photocopying, recording, or otherwise), or for any purpose, without the expressed permission of Alfa Laval Corporate AB. Alfa Laval Corporate AB will enforce its rights related to this document to the fullest extent of the law, including the seeking of criminal prosecution.



CSI

CONTACT CSI FOR MORE INFORMATION | CSIDESIGNS.COM | SALES@CSIDESIGNS.COM | 417.831.1411